



Florida Department of Transportation

RON DESANTIS
GOVERNOR

1109 South Marion Avenue
Lake City, Florida 32025-5874

JARED W. PERDUE, P.E.
SECRETARY

For Immediate Release
December 4, 2023

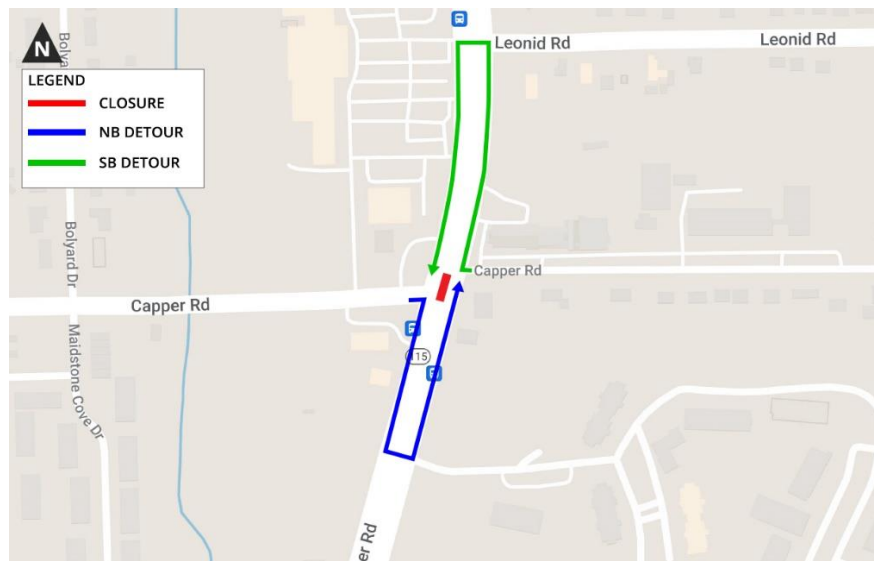
Contact: Brie Isom
(904) 360-5457 | Brie.Isom@dot.state.fl.us

Daytime Detour Planned Tuesday for Capper Road at Lem Turner Road

JACKSONVILLE, Fla. – As part of a milling and resurfacing project on Lem Turner Road (State Road 115) from Soutel Road to Thomas Creek, a detour is scheduled for Capper Road at Lem Turner Road on Tuesday, Dec. 5 from 8:30 a.m. until 8 p.m.

Drivers seeking to travel north on Lem Turner Road from eastbound Capper Road will turn right on Lem Turner Road and make a U-turn to head north. Drivers seeking to travel south on Lem Turner Road from westbound Capper Road will turn right on Lem Turner Road and make a U-turn at Lenoid Road.

Duval Asphalt is estimated to complete the \$16.4 million project by summer 2024, weather and unforeseen circumstances permitting.



Stay informed about lane closures and roadwork in your area by following FDOT District 2 at [@MyFDOT_NEFL](https://twitter.com/MyFDOT_NEFL) on Twitter or at [MyFDOTNEFL](https://www.facebook.com/MyFDOTNEFL) on Facebook.

###

Improve Safety, Enhance Mobility, Inspire Innovation
NFLRoads.com | [@MyFDOT_NEFL](https://twitter.com/MyFDOT_NEFL) | [Facebook.com/MyFDOTNEFL](https://www.facebook.com/MyFDOTNEFL)

The Florida Department of Transportation's mission is to provide a safe transportation system that ensures the mobility of people and goods, enhances economic prosperity, and preserves the quality of the state's environment and communities. The department is committed to building a transportation system that not only fits the current needs of Florida's residents and visitors, but also enhances mobility throughout the state to accommodate its consistent and rapid growth. The unique nature of the Sunshine State and its year-round warm climate provides numerous opportunities to achieve the department's mission through multiple transportation modes including highways/streets, air, rail, sea, spaceports, transit, and the ever-expanding deployment of bicycle & pedestrian facilities.